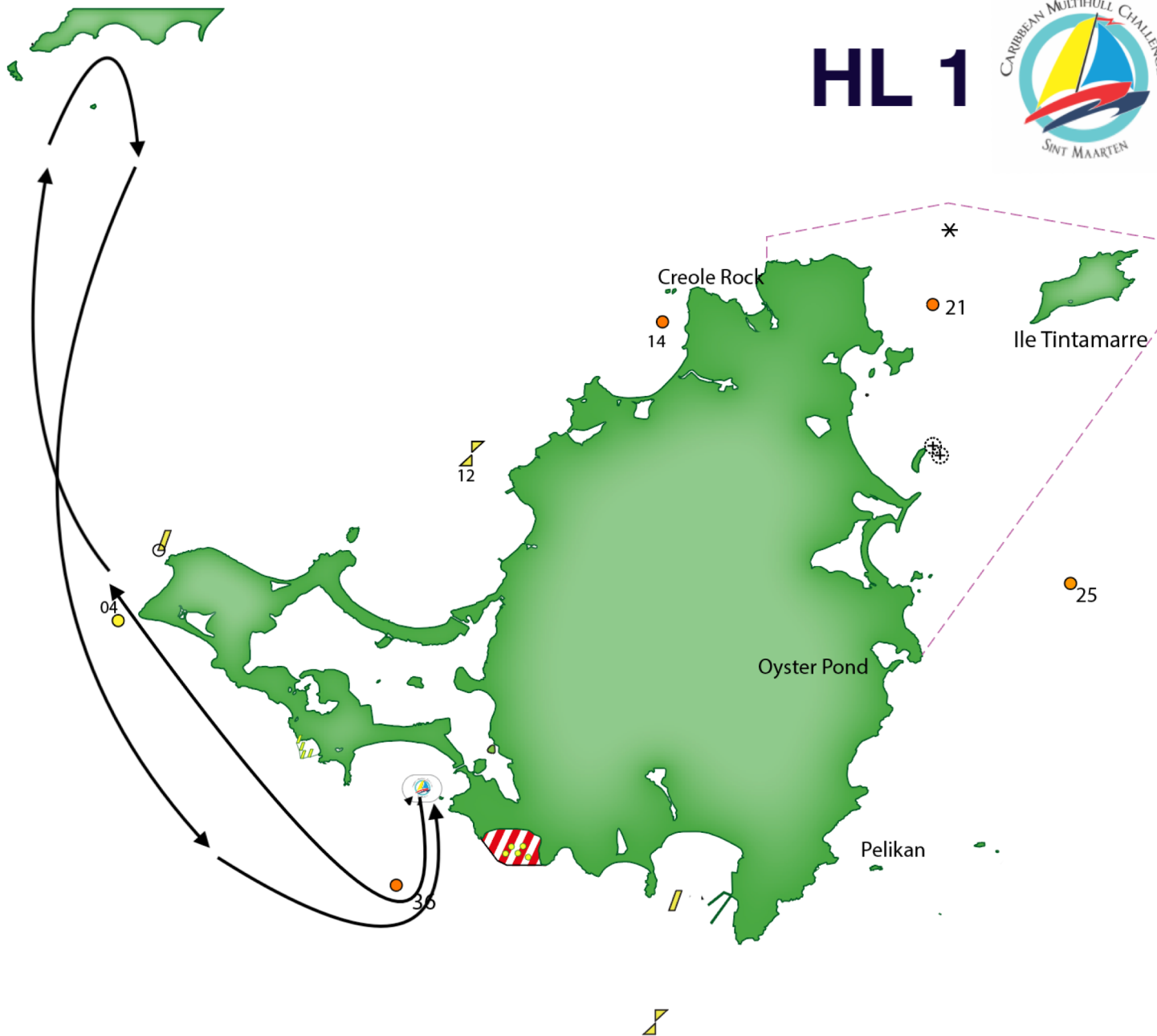


HEAD OF LAND COURSE ONE

Start Simpson Bay CMC start
36 to starboard
04 to port
Blowing Rock to starboard
04 to port
36 to port
Finish CMC start finish
Approx 20 miles

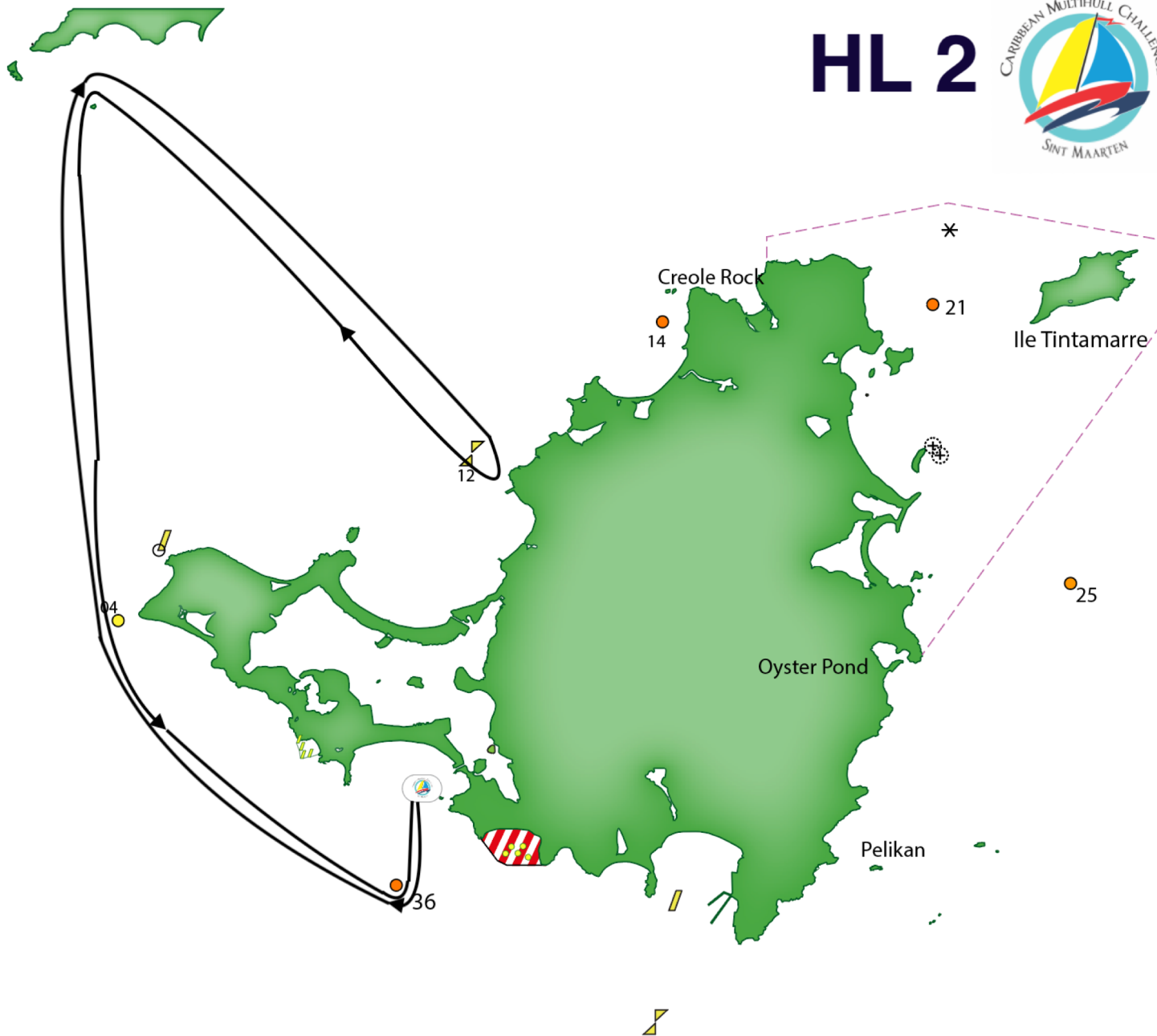




HEAD OF LAND COURSE TWO

Start Simpson Bay CMC start
36 to starboard
04 to starboard
Blowing Rock to Starboard
12 to starboard
Blowing Rock to port
04 to port
36 to port
Finish CMC start
Approx. 33 miles





HEAD OF LAND COURSE THREE

Start Simpson Bay CMC start
36 to starboard
04 to starboard
Blowing Rock to Starboard
12 to starboard
04 to port
Boardwalk Bouy to port
36 to starboard
Finish CMC start finish
Approx 32 ½ miles



HL 3



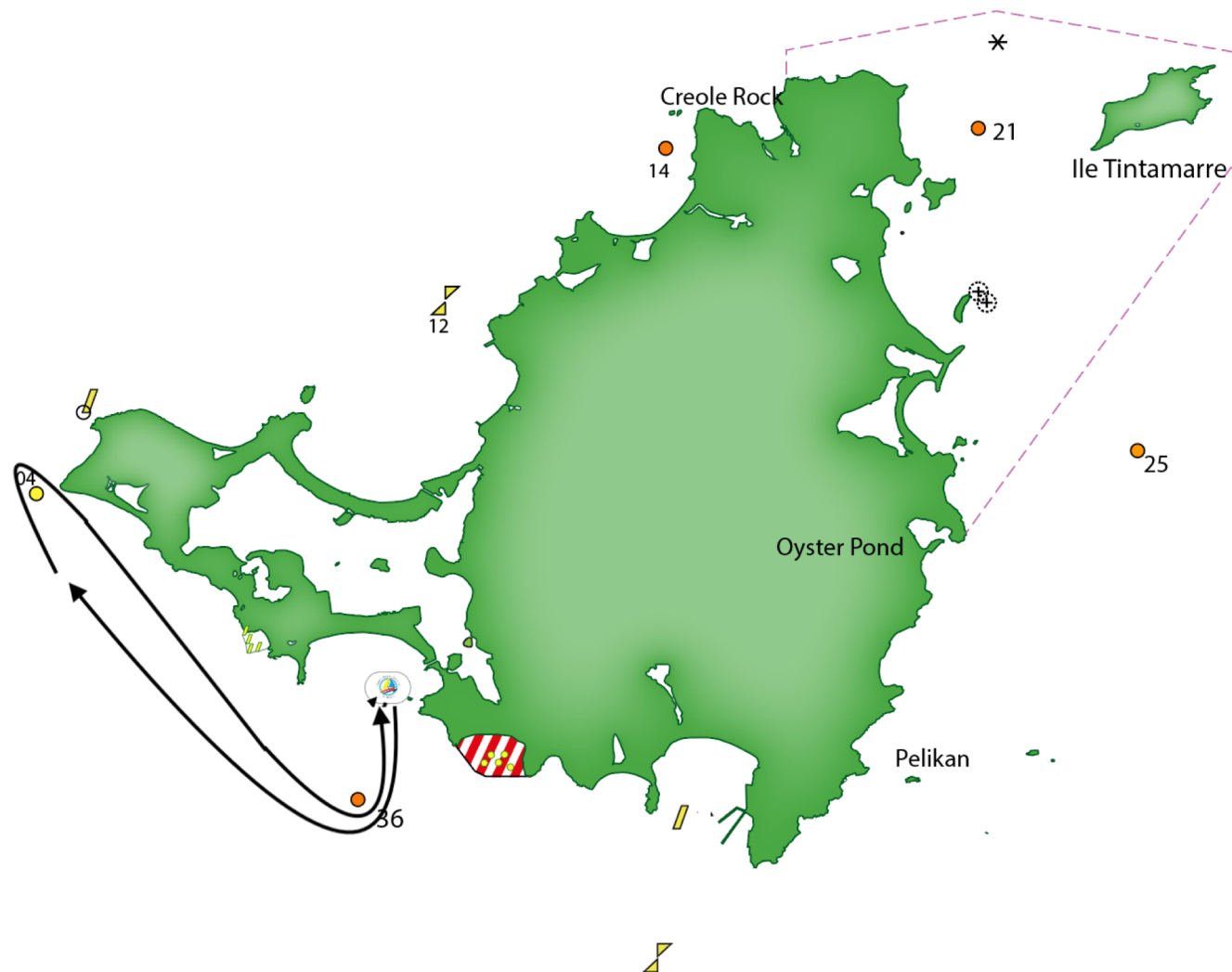
HEAD OF LAND COURSE FOUR

Start Simpson Bay CMC start
36 to starboard
04 to starboard
36 to port
Finish CMC start finish
Approx 10 miles





HL 4



ST BARTHS DIRECTION

COURSES ONE

CMC start line

36 to port

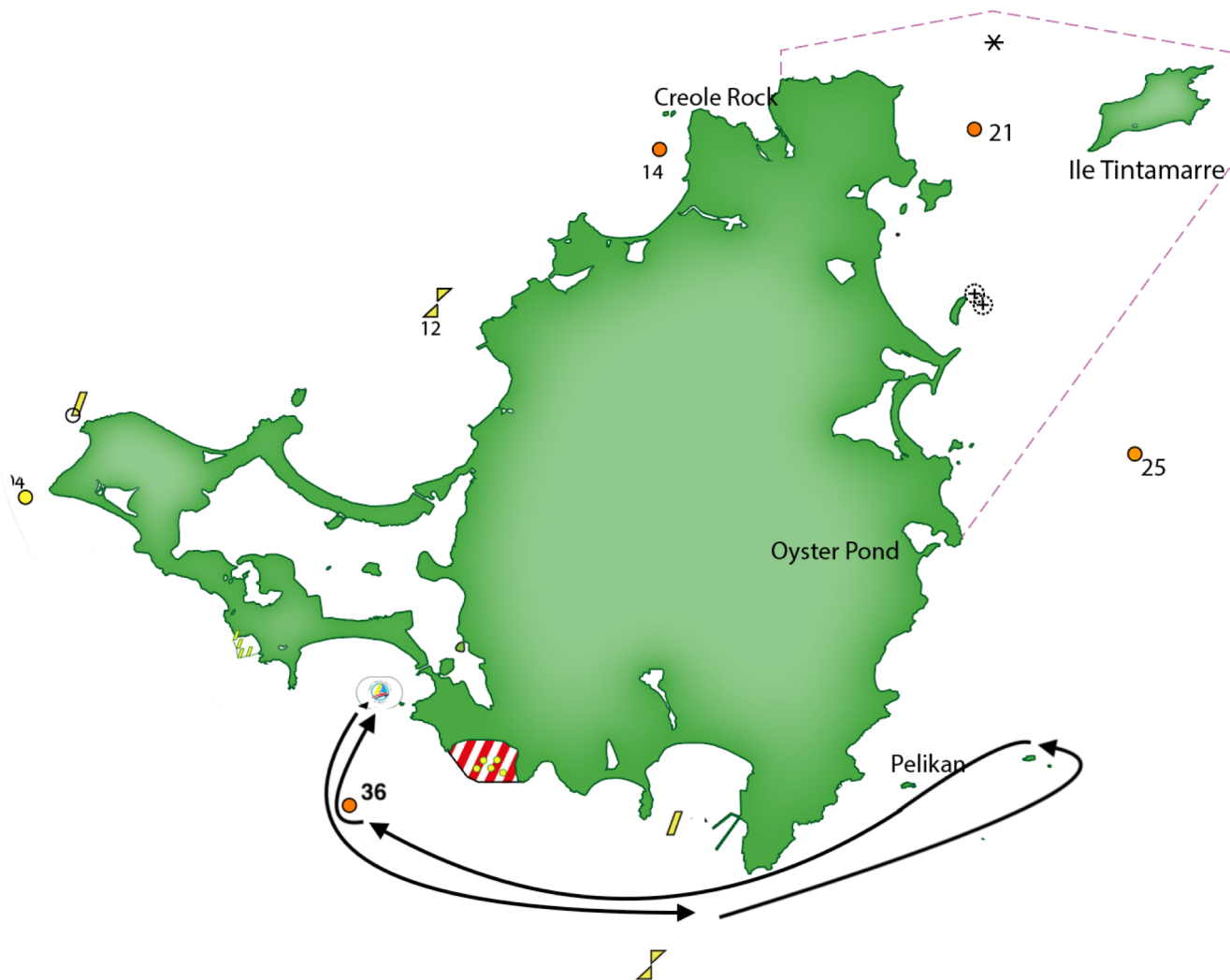
Molly Beday to port

36 to starboard

Finish

Approx 14 miles





ST BARTHS DIRECTION

COURSES TWO

CMC start line

36 to Port

All Grouper Rocks to port

Molly Beday to port

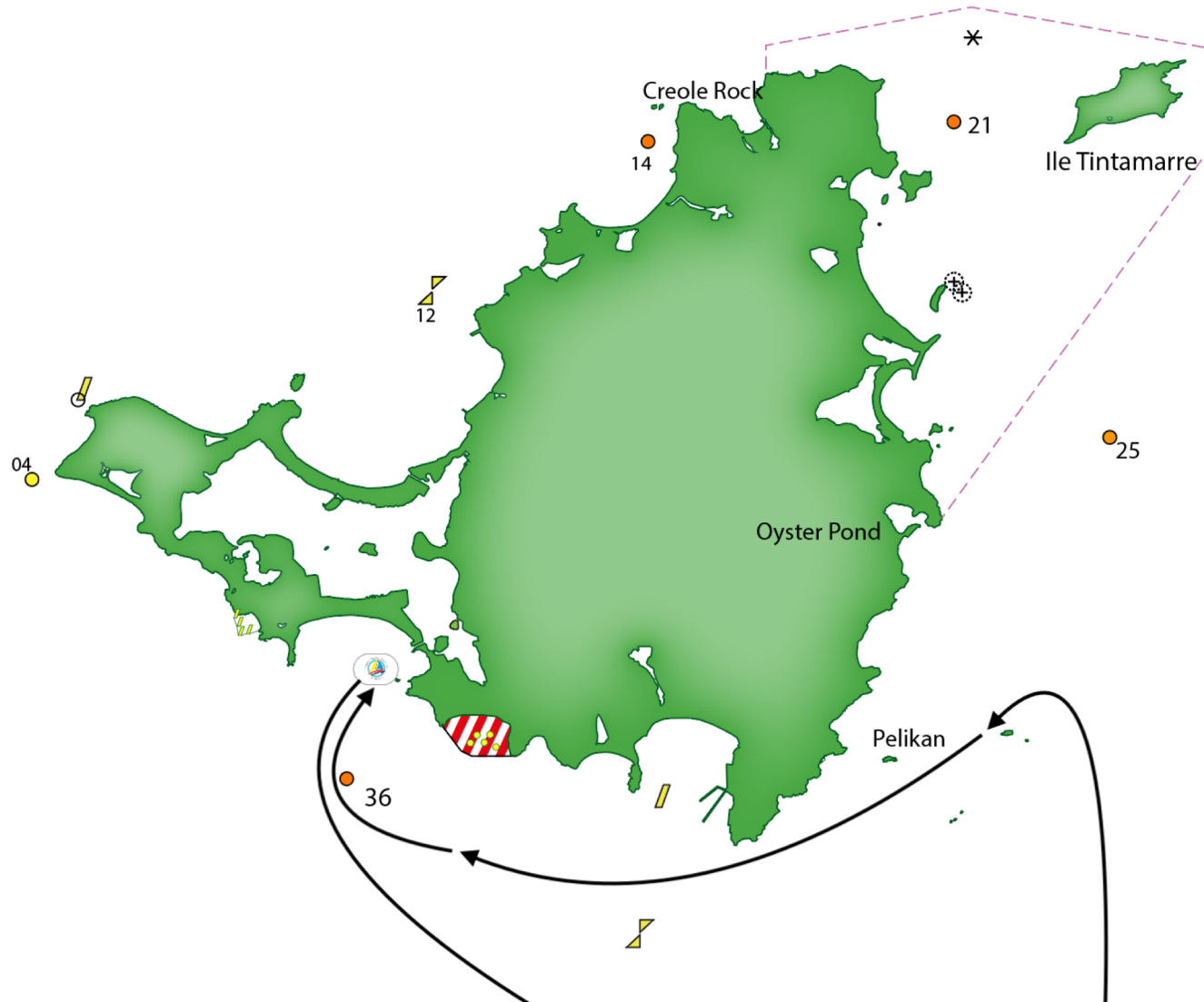
36 to starboard

Finish CMC start finish line

Approx 27 miles



STB 2



STB 2

Attachment



ST BARTHS DIRECTION

COURSES THREE

CMC start line

36 to port

All Groupers to port

Flat island to port

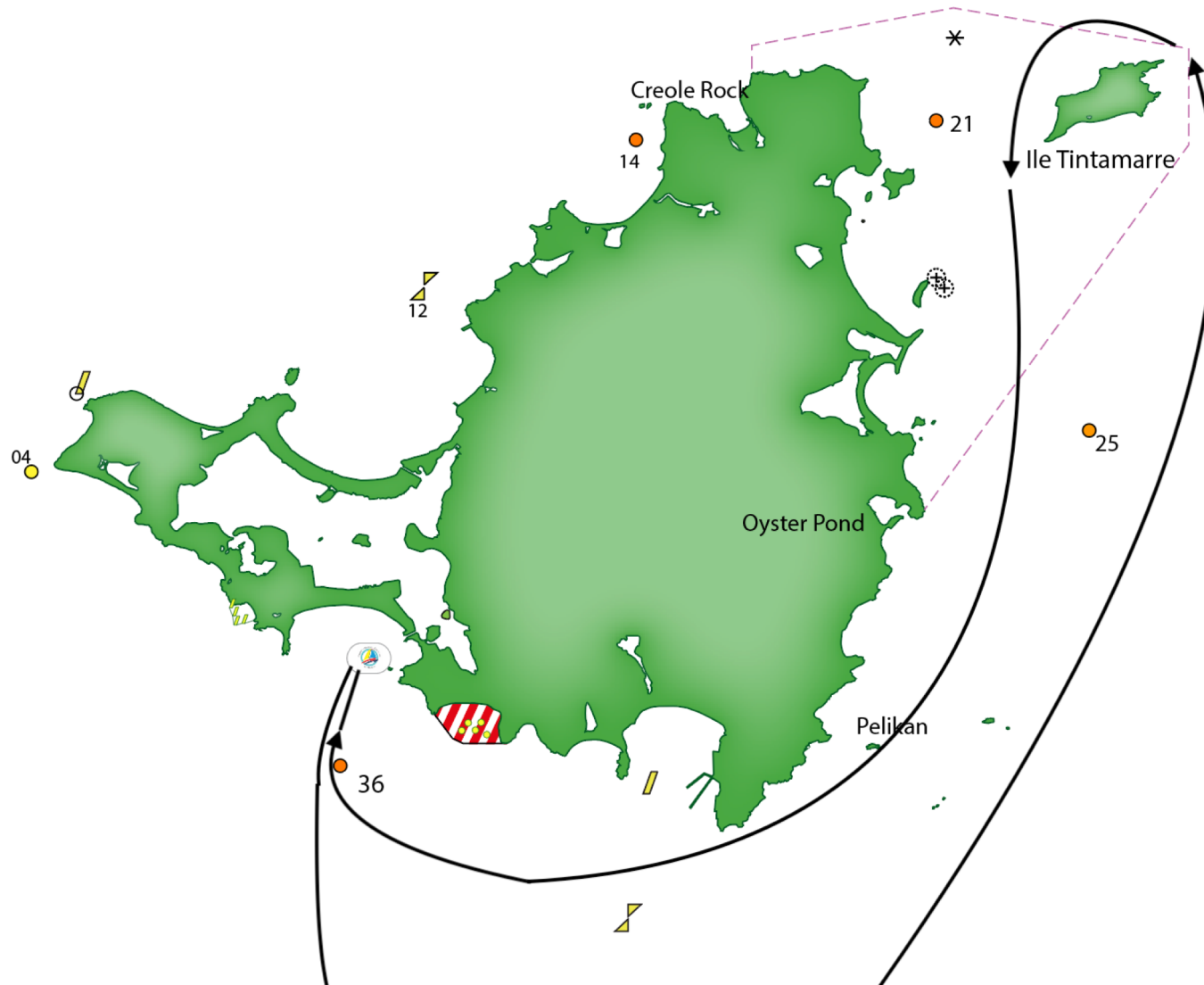
36 to starboard

Finish CMC start finish

Approx 39 miles

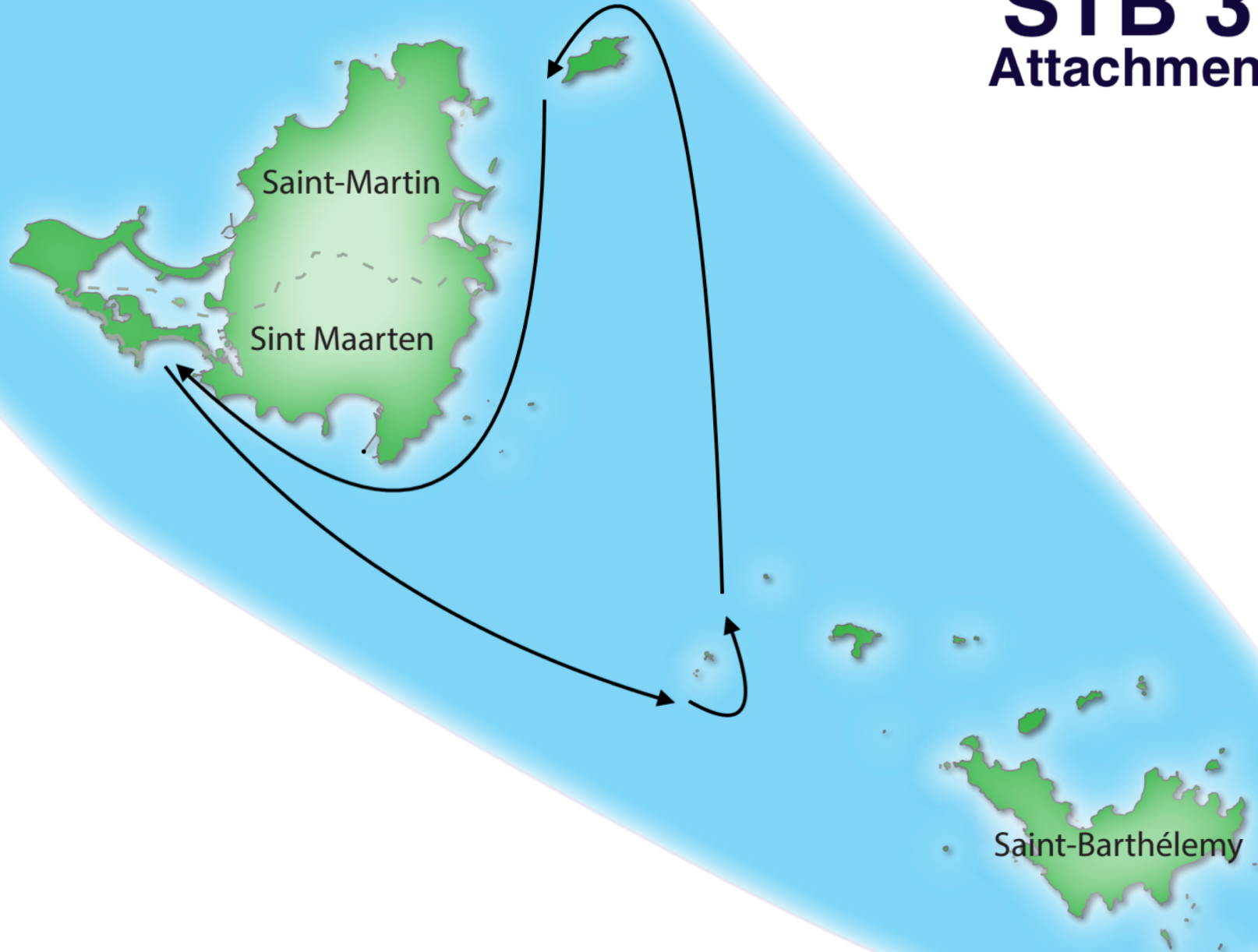


STB 3



STB 3

Attachment



ST BARTHS DIRECTION

COURSES FOUR

CMC start line

36 to port

St Barths to port

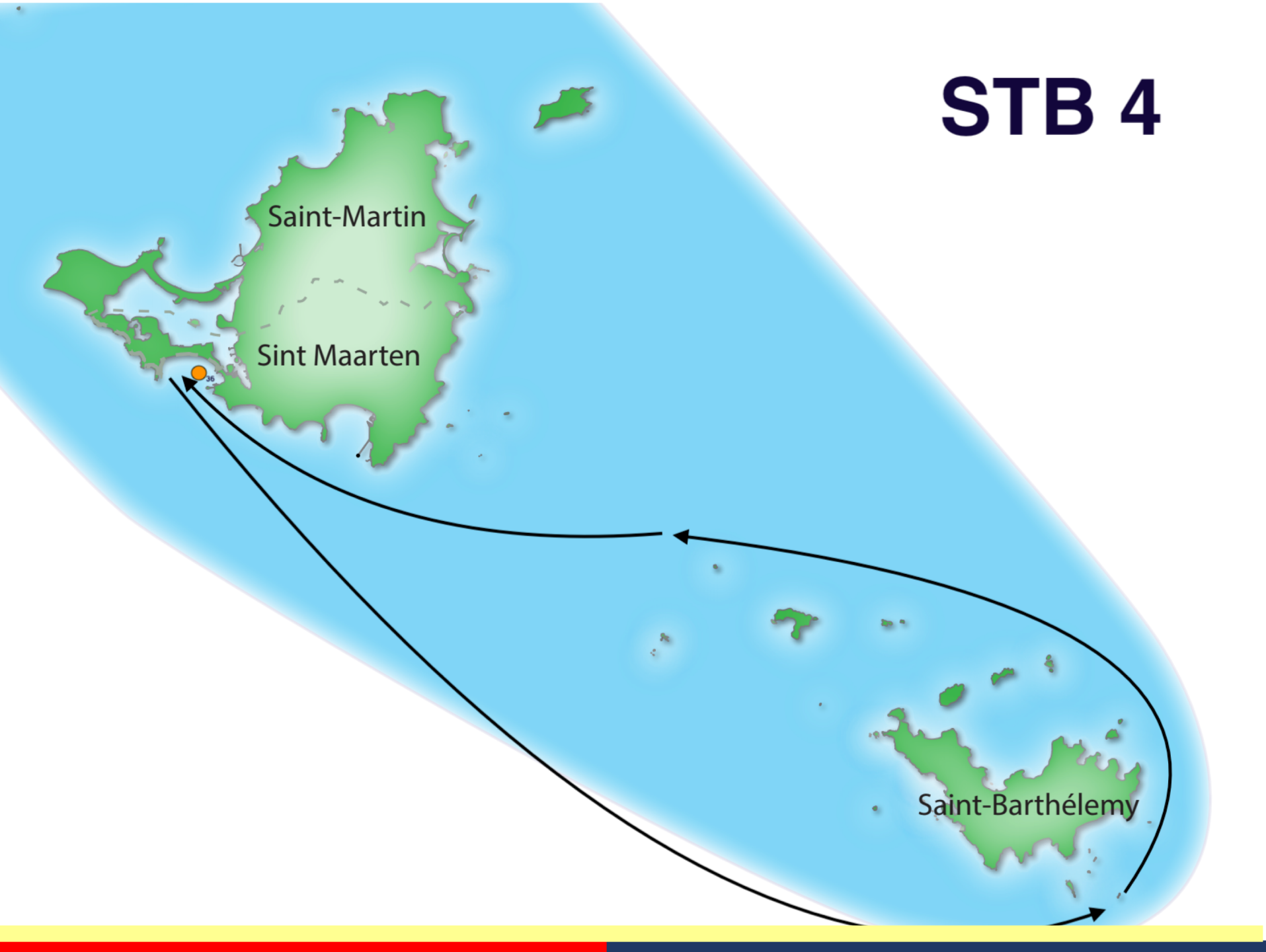
36 to starboard

CMC start finish

Approx 43 miles



STB 4



AROUND THE ISLAND

COURSE ONE

CMC start

36 to starboard

Around St Maarten /St Martin

36 to starboard

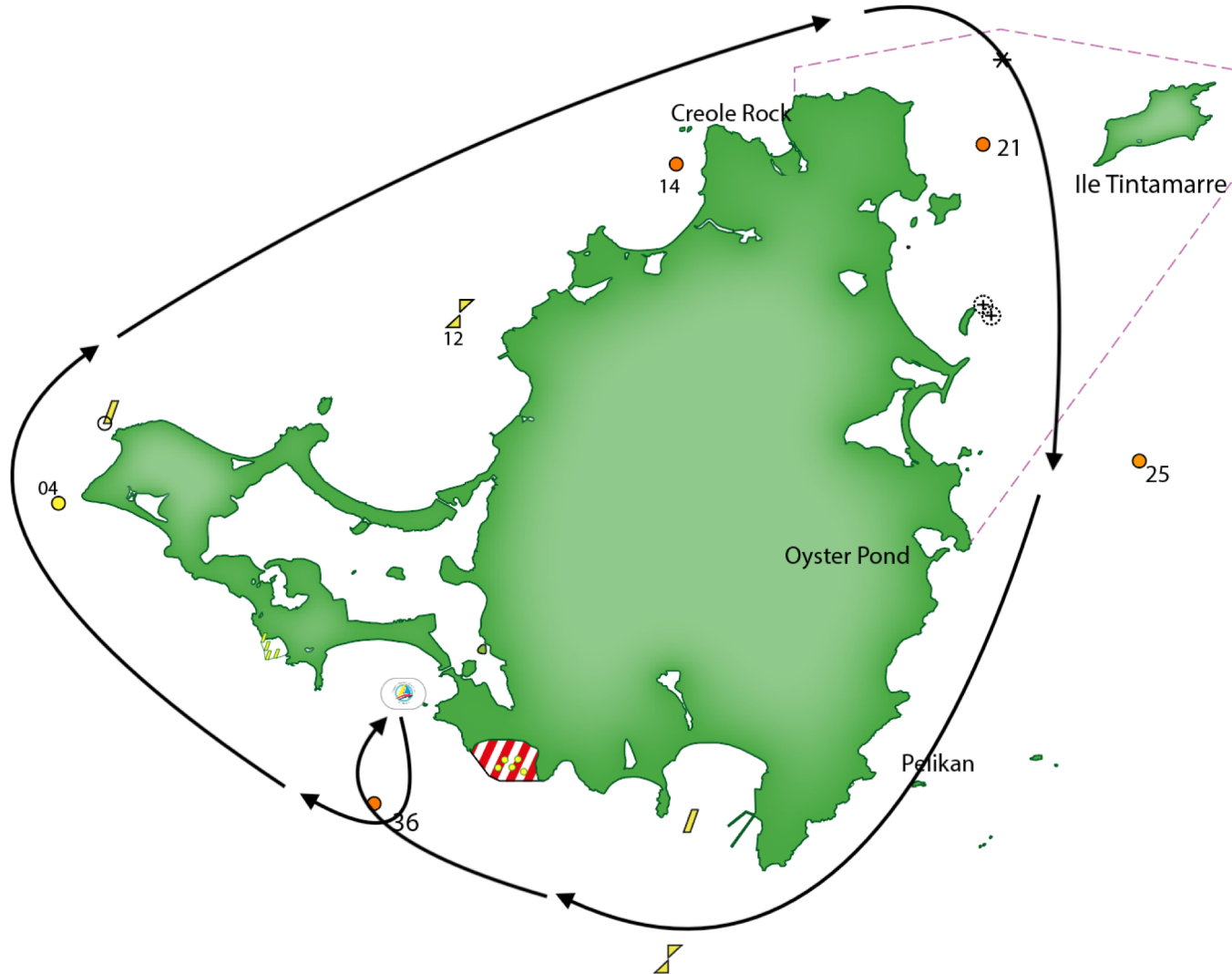
CMC start finish line

Approx 29 miles





Around 1



AROUND THE ISLAND

COURSE TWO

CMC start

Blowing Rock to Starboard

Flat Island to starboard

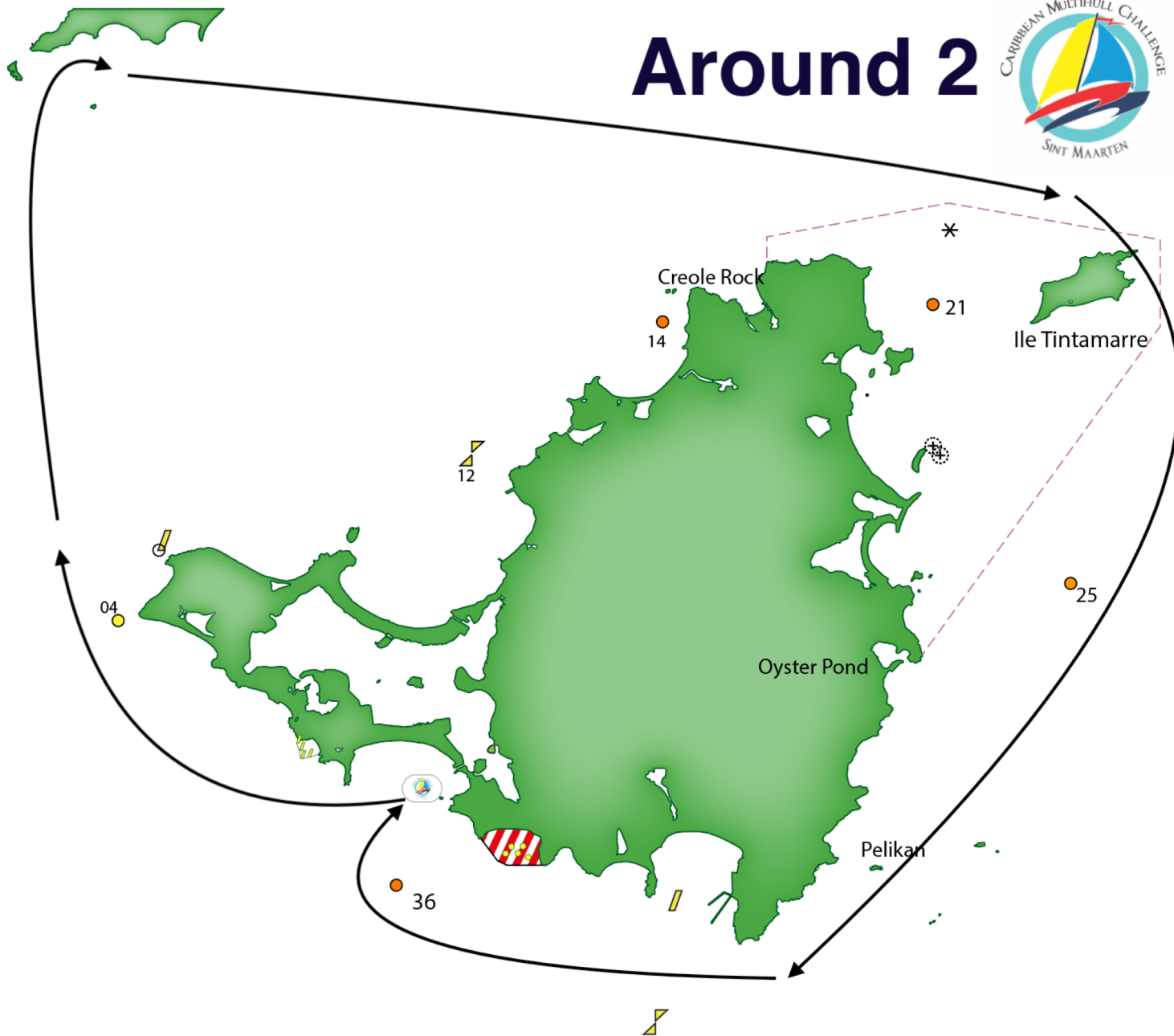
36 to starboard

Finish CMC start finish

Approx 35 miles



Around 2



AROUND THE ISLAND

COURSE THREE

CMC start
36 to starboard
St Maarten and Tintamare to Starboard
36 to starboard
Finisch CMC start finish



Around 3

