

La Course de L'Alliance

1-3 December 2017

Sailing Instructions



Incorporating SMYC Standard Clauses for Sailing Instructions - Offshore.

1. Contact:

Regatta Website	http://regattaguru.com/cdla
Organising Authority	Sint Maarten Yacht Club (SMYC)
Email:	paul@regattaguru.com , Tel: +1 721 581 0864

2. Schedule of events:

Date	Time	Where	What
Thur 30 Nov	1700	SMYC	Registration until start of Skippers Briefing
Thur 30 Nov	1800	SMYC	Skippers Briefing
Fri 1 - Sun 3 Dec	See below		Racing
Fri 1 Dec	1800	Eddy's	Daily Prize-giving followed by dinner
Sat 2 Dec	1800	Roy's Bar and Grill	Drinks, followed by Daily Prize-giving, followed by dinner
Sun 3 Dec	1600	SMYC	Prize-giving

3. VHF Channel: 71.

4. Official Notice Board and Announcements:

Official notices will be posted on the Official Notices section of the Regatta Website. At the Daily Prize-giving, the intended start area for the next day's racing will be announced. Other changes to the Sailing Instructions may be announced by VHF.

5. Schedule of races, start area and finish area:

Date	Approximate Start area	1st Warning	Approximate Finish location	Time limit
Fri 1	Simpson Bay ~18°01.9N, 063°06.5W	not before 1025	Near green nav mark G2 ~17°54.3N, 062°51.7W	3 hrs after 1st in each class
Sat 2	Near green nav mark G2 ~17°54.3N, 062°51.7W	not before 0930	Road Bay, Anguilla ~ 18°12N, 063°05.7W	5 hrs after 1st in each class
Sun 3	Road Bay, Anguilla ~18°12N, 063°06W	not before 1100	Simpson Bay ~ 18°02.0'N 63°06.0'W	1.5 hrs after 1st in each class

6. Start and Finish line description:

- 6.1. The location of the start and description of the start line will be announced each evening for the following morning.
- 6.2. The finish line will be
 - a) between an orange or blue flag on a committee boat and a nearby orange or black and white chequered mark or a navigation mark, or
 - b) between two marks which may be navigation marks
- 6.3. The committee boat for finishing may not be the same as the committee boat for starting.
- 6.4. The description of the finish line will be announced each day with the course description.

7. Classes, Class flags, Order of starts:

Start order	Class	Rating System	Class Flag	Additional Identification
1	Racing	CSA	Pink	none
2	Cruising	CSA	Green	none
3	Multihull	Multihull	Lt Blue	none

8. Other rules:

- 8.1. Turns penalty: 2 turns for Racing and Cruising, 1 turn for Multihull.
- 8.2. Discards: None.
- 8.3. Prizes: Prizes for 1st, 2nd, and 3rd each day, and 1st, 2nd, and 3rd of the series in each Class.

Sint Maarten Yacht Club



STANDARD CLAUSES for SAILING INSTRUCTIONS - OFFSHORE

When this document is included in a Sailing Instructions (SI), the two documents combined form the 'Sailing Instructions' as defined in RRS Appendix J2. The SI may change any part of this document by stating the Standard Clause (SC) changed and the change.

1. RULES

- 1.1. The regatta will be governed by the rules as defined in The Racing Rules of Sailing.
- 1.2. No national authority prescriptions will apply.
- 1.3. Classes designated as 'CSA' will also be governed by the CSA Rating Rule except that if so stated on the SI, boats not holding a current Rating certificate may apply for a temporary rating and if granted, such rating will apply for this event only.
- 1.4. Classes designated as 'Multihull' will also be governed by the CSA Multihull Rating Rule.
- 1.5. All classes will be governed by the Caribbean Regatta Safety and Equipment Regulations.
- 1.6. Any other rule changes are detailed in the SI.
- 1.7. If there is a conflict between languages the English text will take precedence.

2. ADDITIONAL IDENTIFICATION

- 2.1. If required by the Notice of Race, boats shall display identification while racing. The organising authority will supply such identification and instructions for their use, which instructions will form part of the Sailing Instructions.
- 2.2. If class flags are to be displayed by competing boats, they are to be displayed conspicuously abaft the main mast of the boat.

3. NOTICES TO COMPETITORS AND COMMUNICATIONS

- 3.1. Notices to competitors will be posted on the official Notice Board as described in the SI.
- 3.2. VHF Radio may be used to communicate with competitors on the water. The channel(s) to be used are detailed in the SI.

4. CHANGES TO SAILING INSTRUCTIONS

- 4.1. Changes to the Sailing Instructions will be posted not less than 2 hours before the warning signal of the first race in which it will take effect, except that any change to the schedule of races will be posted by 2000 on the day before it will take effect.
- 4.2. Changes to Marks, Courses, and the Starting Order may be made orally by the Race Committee prior to the warning signal of any affected class by:
 - a) displaying code flag 'L' with one sound, and
 - b) announcing the change by hailing each boat sailing in the starting area or by VHF Radio on the channel designated in the SI.

5. CLASSES, CLASS FLAGS, SCHEDULE OF RACES, And STARTING ORDER

- 5.1. Classes, Class flags, the Schedule of Races, and the scheduled Starting order for the first race of each day is given in the SI.

- 5.2. Subsequent races on each day may start in a different order.

6. RACING AREA and LOCATION OF START

The location of the start is described in the SI.

7. PROHIBITED AREAS

While racing, boats shall not enter the following areas which are defined as obstructions:

- 7.1. The area between any mooring buoy or mark in Cole Bay and the nearest shoreline.
- 7.2. The area between any yellow mark in Maho Bay and the nearest shoreline.

8. THE COURSES

- 8.1. The course to be sailed for each class will be signalled not later than the warning signal for that class by displaying a course board on the committee vessel or by announcing the course by VHF radio or other means of communication.
- 8.2. When displaying a course board on the committee vessel, the board will display a symbol for each mark in the order in which it is to be rounded. A Green symbol or a symbol on a green background denotes that the mark is to be rounded to starboard, a red or orange symbol or a symbol on a red or orange background denotes that the mark is to be rounded to port.
 - a) Announcing the course by VHF.
- 8.3. The SI may change the procedure by which the course is signalled.

9. MARKS

- 9.1. The marks are described in the SI and an optional accompanying chart. The chart does not form part of the Sailing Instructions.
- 9.2. Unless specified in the SI, the starting and finishing marks will be orange ball-shaped fenders or orange tetrahedron marks.

10. THE START

- 10.1. Unless otherwise specified in the SI the starting line will be between a staff displaying an orange flag on the committee boat and the starting mark.
- 10.2. If specified in the SI a starting time limit will apply: a boat starting later than the specified time after her starting signal will be scored Did Not Start without a hearing. This changes rules A4 and A5.

11. CHANGING THE NEXT LEG OF THE COURSE

- 11.1. The Race Committee will not signal a change of the position of a mark unless the change is greater than 20° in direction or 25% in length. This changes RRS 33.

12. CHANGING THE COURSE

- 12.1. Provided that all boats are signalled before they begin the first leg to be changed, the Race Committee may change the remaining portion of the course.

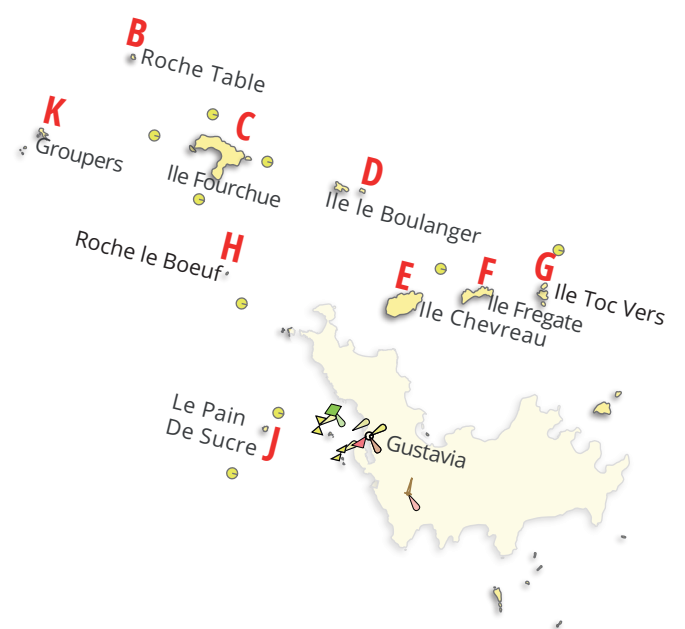
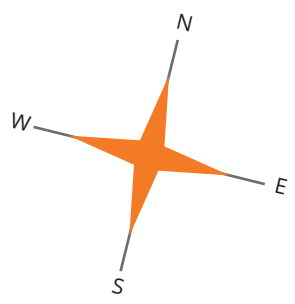
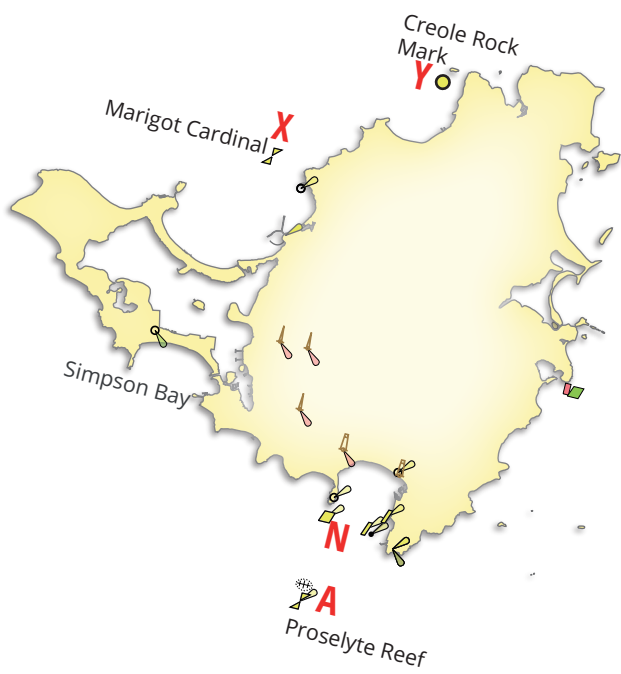
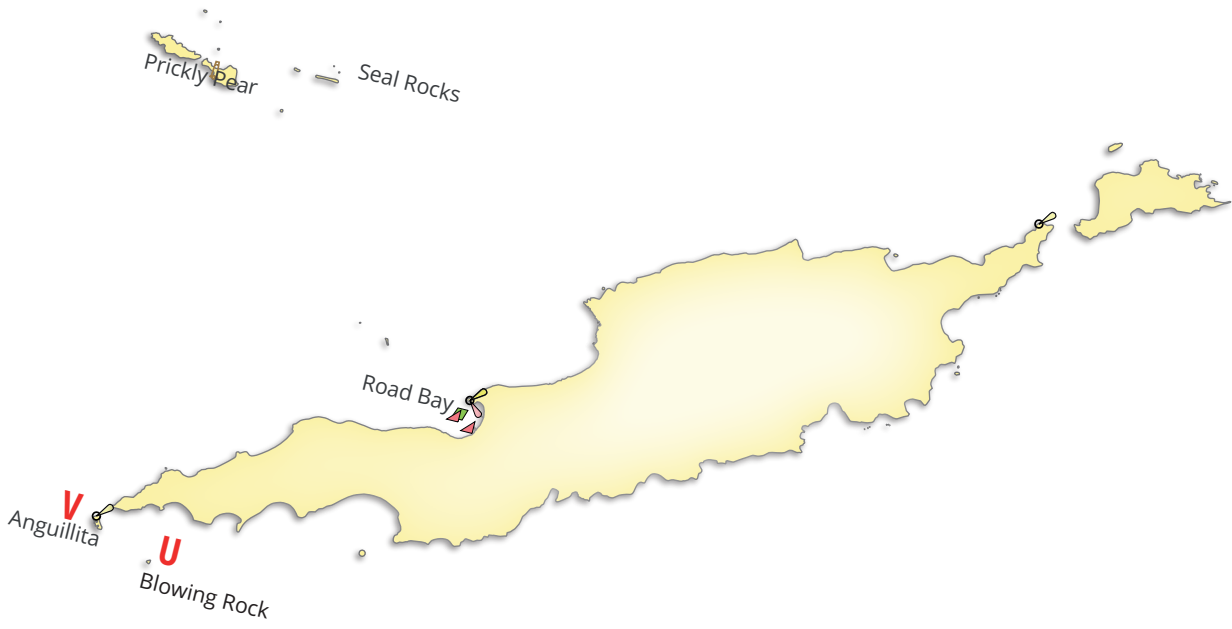
- 12.2. The signal to change the course shall be either:
- a) the marks to be sailed after the mark at which the signal is displayed, signalled in accordance with SI 8.1, or
 - b) a 'Z' symbol, which means that the course is changed to remove all the remaining marks except the finish from the course and finish at the finish line.
13. PENALTY SYSTEM
- 13.1. Unless specified in the SI RRS 44.1 is changed so that the Two-Turns Penalty is replaced by the One-Turn Penalty.
 - 13.2. RRS 44 is extended to allow a boat to accept an Exoneration Penalty (scoring abbreviation "EXP") for a breach of a rule of Part 2 prior to a protest hearing. The Exoneration Penalty will be 30% of the number of boats entered (rounding to the nearest whole number, 0.5 upward) added to her finish position, however she shall not be scored worse than "Did Not Finish".
14. THE FINISH
- Unless specified in the SI the finishing line will be between a staff displaying an orange flag on the committee boat and the finishing mark.
15. TIME LIMIT
- If a Time Limit is stated in the SI, boats failing to finish within the specified time after the first boat in their class sails the course and finishes will be scored Time Limit Expired (TLE) without a hearing. This changes RRS 35, A4 and A5.
16. PROTESTS AND REQUESTS FOR REDRESS
- 16.1. For each class, the protest time limit is 1 hour after the last boat has finished the last race of the day, or after Standard Clause 15 has been applied to that race, or the race has been abandoned.
 - 16.2. SC 2 shall not be grounds for a protest by a boat. This changes RRS 60.1(a).
 - 16.3. Except for breaches of RRS Part 2, the protest committee may apply any penalty that they deem equitable. Such a penalty will be scored with the abbreviation "DPI". This changes RRS 64.1.
17. SCORING
- Unless specified in the SI, a boat's series score will be the total of her race scores.
18. EQUIPMENT AND MEASUREMENT CHECKS
- A boat or equipment may be inspected at any time for compliance with the class rules and Sailing Instructions. On the water, a boat can be instructed by a race committee equipment inspector or measurer to proceed immediately to a designated area for inspection.
19. PRIZES
- Prizes are listed in the SI.
20. DISCLAIMER OF LIABILITY
- Competitors participate in the regatta entirely at their own risk. See RRS 4, Decision to Race. The organising authority will not accept any liability for material damage or personal injury or death sustained in conjunction with or prior to, during, or after the regatta.
21. RIGHTS TO USE NAME AND LIKENESS
- By participating in this event, competitors grant to the organising authority and the event sponsors the right, in perpetuity, to make, use, and show, at their discretion, any photography, audio and video recordings, and other reproductions of them made at the venue or on the water from the time of their arrival at the venue, until their final departure, without compensation.

Information below this point is not part of the Sailing Instructions.

Additional information (*links correct at time of publication*):

Racing Rules of Sailing are available at: <http://sailing.org/documents/racingrules/>

Caribbean Regatta Safety and Equipment Regulations at: <https://regattaguru.com/static/safety.html>



Course de l'Alliance

Attachment A - Marks



Symbol	Mark name	Description	Approx Position
W	Windward	A laid windward mark	to windward of the committee boat
L	Leeward	A laid leeward mark	to leeward of the committee boat
A	Proselyte Reef	West Cardinal Mark	17°59.36'N, 063°03.66'W
K	Grouper Rocks - Northern	The northern rocks of the Grouper rocks (la Poule et les Pousins)	17°57.01'N, 062°56.86'W
B	Roche Table	Roche Table (AKA Roche Plate or Table à Diable)	17°58.41'N, 062°55.55'W
C	Ile Fourchue	Ile Fourchue	17°57.47'N, 062°54.21'W
D	Ile le Boulanger	Ile le Boulanger (the Eastern island of the two - incorrectly marked on some charts)	17°57.37'N, 062°52.07'W
E	Ile Chevreau	Ile Chevreau	17°56.01'N, 062°51.08'W
F	Ile Frégate	Ile Frégate	17°56.40'N, 062°50.06'W
G	Ile Toc Vers	Ile Toc Vers	17°56.59'N, 062°49.12'W
H	Roche le Boeuf	Roche le Boeuf	17°55.79'N, 062°53.71'W
J	Le Pain de Sucre	Le Pain de Sucre	17°53.82'N, 062°52.59'W
T	Ile Tintamarre	Ile Tintamarre	18°07.12'N, 062°58.80'W
U	Blowing Rock	Blowing Rock	18°09.03'N, 063°09.65'W
V	Anguillita	Anguillita	18°09.39'N, 063°10.60'W
X	Marigot Cardinal	West Cardinal Mark	18°05.27'N, 063°05.67'W
Y	Creole Rock Mark	A government yellow spar buoy near Creole Rock	18°06.97'N, 063°03.43'W
N	Philipsburg Mark	Yellow spar mark ~300m due South of Fort Amsterdam - most western yellow	18°00.61'N, 063°03.58'W