



Soualiga Challenge RELOADED



Sint Maarten

The Sint Maarten Canoe Federation is pleased to welcome you to the FIRST annual Soualiga Challenge Reloaded.

DATE AND VENUE

The Soualiga Challenge Reloaded will be held on **6 April 2019**, in Sint Maarten.

COURSE

The race will be conducted in the Atlantic Ocean in the channel between St. Barthelemy, French West Indies and Sint Maarten. The area normally has winds of 15 knots and swells of 1.5 meters from the east or southeast at this time of the year. The race will consist of a single 23km down-wind run starting in Isle Fourche, St. Barthelemy and finishing in Simpson Bay, Sint Maarten. Additional course details are described in attachment A. In case of adverse conditions on the day, an alternate course will be selected to provide optimal downwind racing.

CLASSES

The event will be open to the following classes:

Surfski Single (S1), open
Surfski Doubles (S2), open
Outrigger Canoe Single (OC1) open
Stand-up Paddle board (SUP) open

Classes will not be split into age groups.

PRIZES

Prizes will be awarded as follows:

Presentation for first, second and third in each class

There will be no cash prizes

Hotspot – There will be no hotspot

ENTRY FEE

Entry for 2019 will be free of charge

CRAFT

There are a limited number of craft available for visiting paddlers. Please contact the organizers if you need to borrow or rent a craft locally. For paddlers wishing to transport their craft to St Maarten, this can be accomplished with minimum of formalities.

EVENT SCHEDULE

Saturday 6 April 2019

09:00 Load craft onto catamaran in Simpson Bay
10:30 Depart Simpson Bay for Isle Fourche
13:00 Arrive Isle Fourche
13:45 Start SUP race
14:00 Start Surfski and OC race
15:30 First finishers expected at Simpson Bay
16:30 Cut-off at Point Blanche
18:00 Award Ceremony, Buccaneer Beach Bar

IDENTIFICATION OF BOATS AND SPONSORS' MARKS

To help with identification at sea, adhesive numbers will be provided that must be displayed on the starboard (right side of the) bow of the craft. All advertising material supplied by the organizers will be displayed on the craft as instructed. Failure to comply can result in disqualification.

AWARDS AND CEREMONIES

The first three places of each class will receive awards. To maintain the dignity and solemnity of the presentation ceremony the competitor receiving awards must be neatly attired.

SECURITY MEASURES

Security will be provided by a fleet of motor boats accompanying the race. The safety regulations as described in attachment B must be observed.

TRANSPORT

The organizers will assist with transport from the airport to team accommodation, to the race venue and to the airport where possible. Please contact the organizers with your requirements.

ATTACHMENT A - COURSE

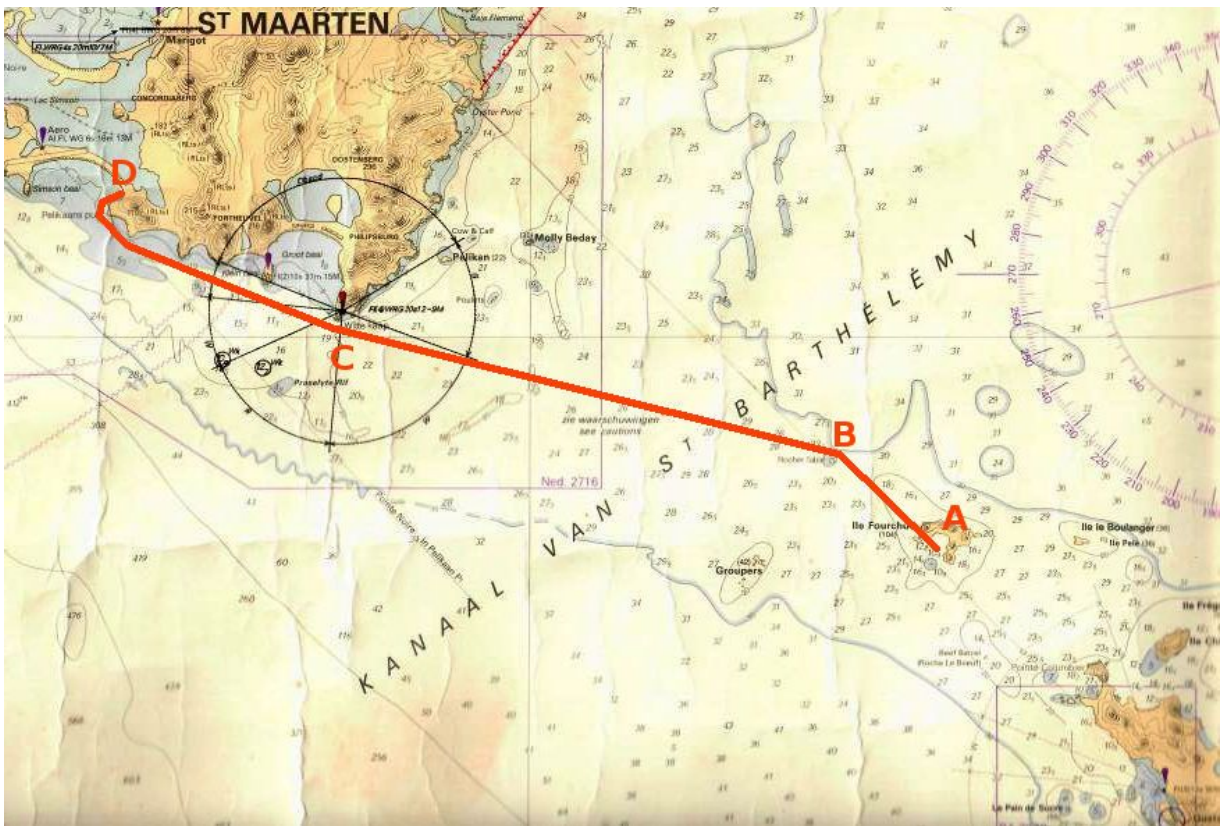
DESCRIPTION

The course will be as follows:

- 1) The race will be started using a **stationary water start**. The start-line will be between a stationary mark and an anchored boat displaying an orange flag in the southern bay of Isle Fourche
- 2) Competitors proceed westwards to around the south-west point of Isle Fourche. It is permitted to pass through the narrow gap between Isle Fourche and the small island to the south.
- 3) Proceed north-west around the north of Rocher Table.
- 4) Proceed towards Simpson Bay, passing Point Blanche.
- 5) Enter Simpson Bay. Competitors may pass over the small reef at the entrance to Simpson Bay at their own risk.
- 6) Finish on the beach at the far eastern corner of Simpson Bay (Kim Sha beach) outside Buccaneer Each Bar.
- 7) The finish line will be approximately 4m from the water's edge. You finish when the nose of your craft crosses the line.

NOTE

- 1) Sea conditions for the course will vary. The first 500m is usually calm. Thereafter one can expect a quartering swell of 0.5m to 1.6m for 2.5km until Rocher Table. From Rocher Table to Point Blanche, a large following swell can be expected. This swell will diminish from Point Blanche to Simpson Bay. There can be flat calm conditions on rare occasions and on other occasions, there can be a following to cross swell of up to 2.5m. A current of varying strength usually flows from north to south.
- 2) The wind is usually a following to quartering, 10 to 25 knots, with 12 to 16 knots being the most common condition with swell of 1 to 2m.
- 8) There will be a strict cut-off enforced at Point Blanche at 16:30. All competitors not reaching Point Blanche by 16:30 will be scored a DNF and will be instructed to board a safety boat.
- 9) Note that there has recently been a lot of Sargasm weed in the area. Clumps of this weed can catch on your rudder slowing you down significantly. It is best to avoid large clumps and to clear your rudder promptly when you do pick up weed.
- 10) The race course will take you past the busy cruise and cargo terminal at Philipsburg and also the fuel bunkering berth at Kool Baai. You must obey the maritime rule of the road at all times and avoid interaction with commercial traffic.



Course from Isle Fourche to Simpson Bay. Start at (A), pass north of Rocher Table (B), pass by Point Blanche (C) (16:30 cut-off) and finish on the beach at Simpson Bay D.



The finish at Simpson Bay (Kim Sha Beach). Pass around the point, cross the reef at (E) if you wish and finish on the beach at (D).

ATTACHMENT B: SAFETY REGULATIONS

The following safety regulations must be observed:

- 1) Each competitor shall wear a suitable PFD with a whistle and signal mirror attached.
- 2) Each competitor will carry at least 1 litres of drinks attached to their person or craft at the start of the race.
- 3) Each competitor must wear a brightly coloured life jacket or over-vest. Safety orange is recommended.
- 4) Each competitor (only one in the case of a double) will be attached to their craft with a sturdy leash from before the start until the finish.
- 5) Each competitor will carry on their person, either:
 - a) One hand held signal flare with burn time at least 1 minute.
 - b) Three mini aerial flares with launcher
(Some flares will be available for loan but it is the competitor's responsibility to ensure that they have one)
- 6) Each competitor must carry a waterproof VHF radio or cell phone on their person.
- 7) At least one paddle blade must be marked with a conspicuous colour to assist in attracting a safety boat's attention when in distress.
- 8) A cut-off time of 16:30 at Point Blanche will be strictly enforced. Any competitor not reaching Point Blanche by 16:30 must abandon the race and board the nearest safety boat. There will be no exceptions.
- 9) If conditions dictate, the race committee will change the course to an alternate course, no later than 09:00 on 6 April 2019.

Further, it is recommended that:

- 1) Each craft be equipped with a compass or GPS to assist with navigation.
- 2) Each competitor should ensure that they are appropriately protected from the sun.

Note

- 1) It is the responsibility of each competitor to determine for themselves if they have the skills and conditioning required to compete in this event. **This responsibility should be taken seriously.** A competitor should not place themselves and others at risk by entering this race if it is beyond their level of skill or conditioning. There will be safety boats on the water during the races. If a safety boat is required to rescue an individual or feels the need to closely monitor them, then that safety boat is being taken away from the rest of the race course and the rest of the other competitors, putting everyone at additional risk.
- 2) It should be kept in mind that weather and water conditions can change rapidly. If a competitor determines during the race that they are at risk, they should abandon the race and head toward a rescue boat. In this case, the competitor should ensure that the race officials at the finish are informed of their withdrawal as soon as possible.
- 3) It is a requirement that all competitors assist fellow competitors in need. Failure to lend assistance can lead to disqualification. A competitor lending assistance during the event will be awarded a time bonus to compensate them for their delay.
- 4) Any competitor can be instructed to abandon the race by the chief safety judge, should the judge be of the opinion that the competitor would be putting themselves or others at undue risk by continuing with the race.